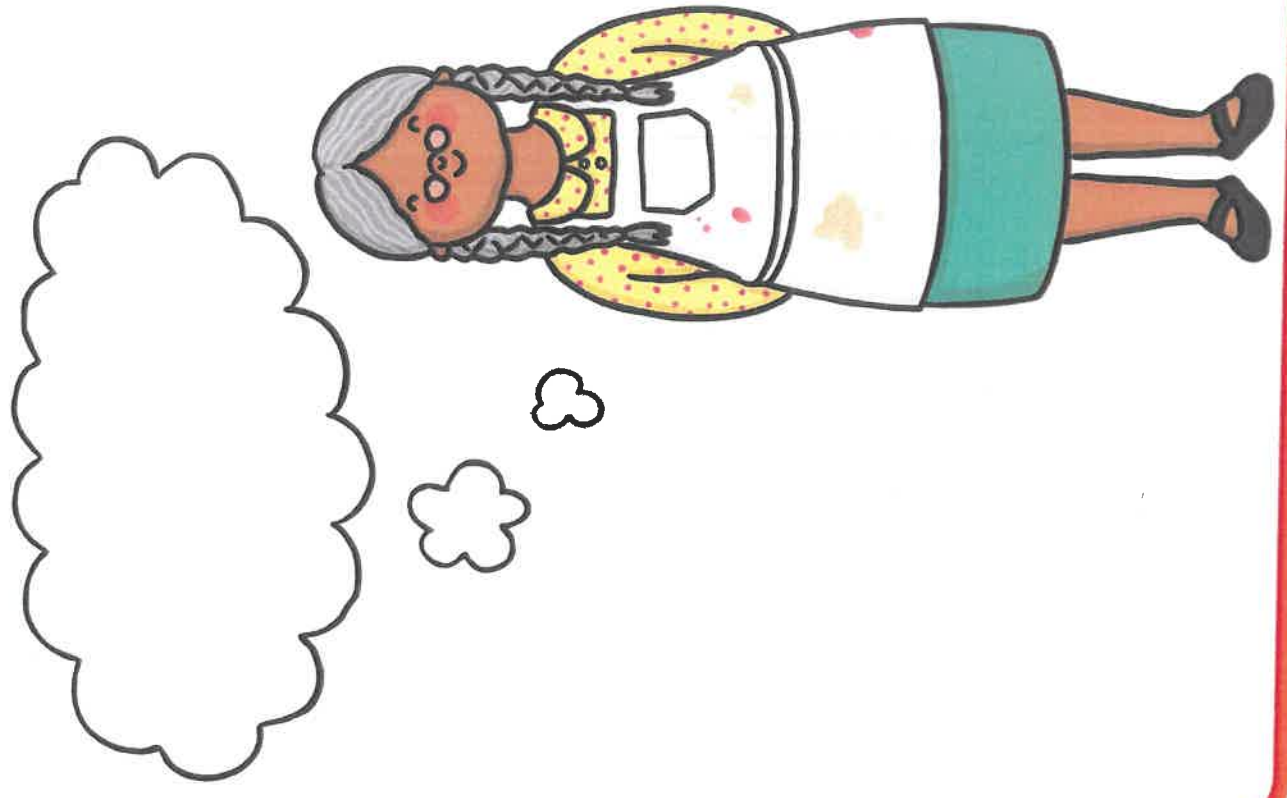
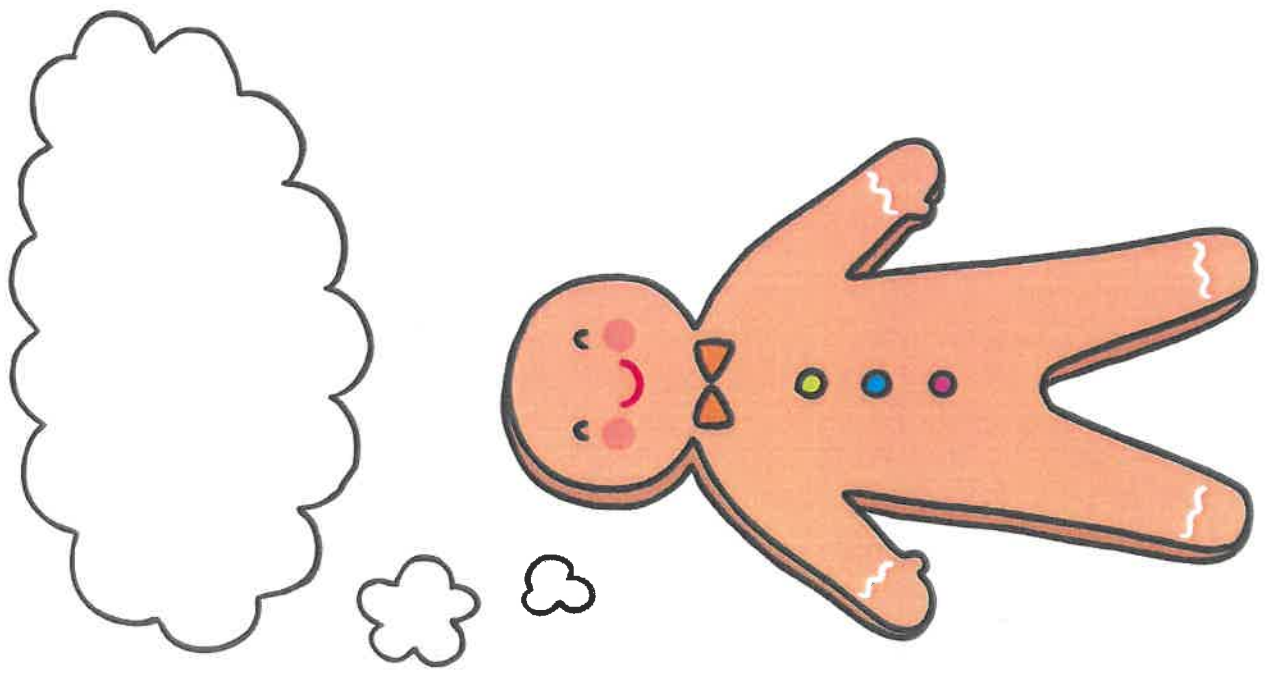


Thursday 24th Feb

What are the Characters thinking? Write what you think they would say.



Subtraction

$$8 - 3 =$$



$$6 - 4 =$$



$$7 - 6 =$$



$$5 - 2 =$$



$$10 - 3 =$$



Craft Instructions

Paper Plate Sheep

Supplies

- Paper plate
- Cotton wool balls
- PVA glue
- Paintbrush or glue spreader
- Black card
- Googly eyes
- Scissors



- Pencil
- White coloured pencil



- 1 First, use a white coloured pencil to draw a head, four legs and a tail for your sheep onto black card.



- 2 Next, use scissors to carefully cut out the different pieces.



- 3 Now flip the plate over so that it is upside down. Then, carefully put a little glue onto the ends of the legs and stick them at the bottom of the plate. Also stick the tail onto one side of the plate. Leave to dry.



- 4 Next, flip the plate over again so that it is the right way up. Now spread some glue all over the surface of the plate.



- 5 Begin sticking the cotton wool balls onto the sticky plate! Try to cover the whole plate with cotton wool, then allow to dry.



- 6 Now you can decorate your sheep's face. Begin by sticking on two googly eyes. Then use the white coloured pencil to draw on a nose and mouth.



- 7 Finally stick the face onto the cotton wool balls, at the opposite end to where the sheep's tail is. Allow to dry and you should have a lovely paper plate sheep!

